



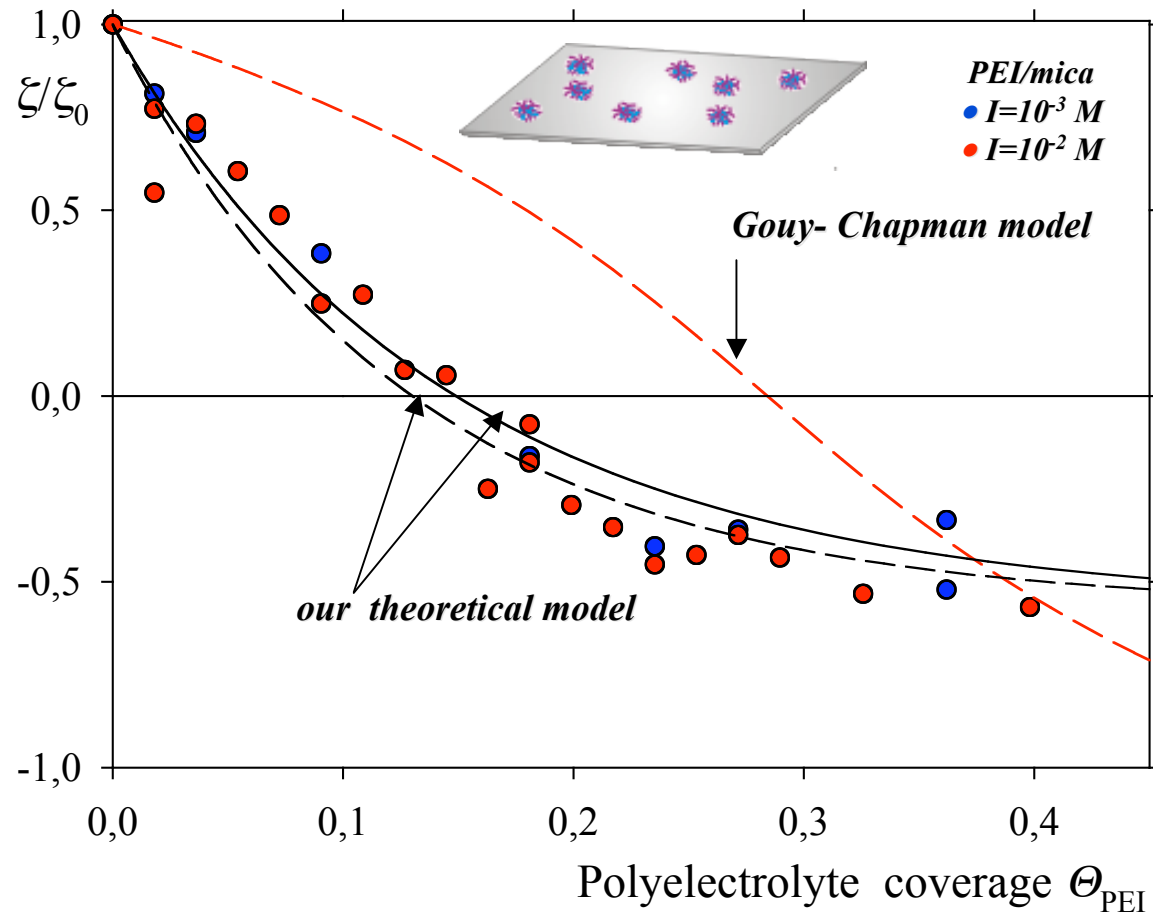
**Institute of Catalysis and Surface Chemistry,
Polish Academy of Sciences
ul. Niezapominajek 8, 30-239 Cracow**

***DEPOSITION OF PARTICLES
AT HETEROGENEOUS AND PATTERNED
SURFACES***

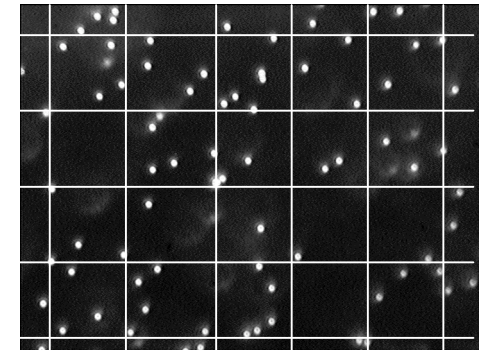
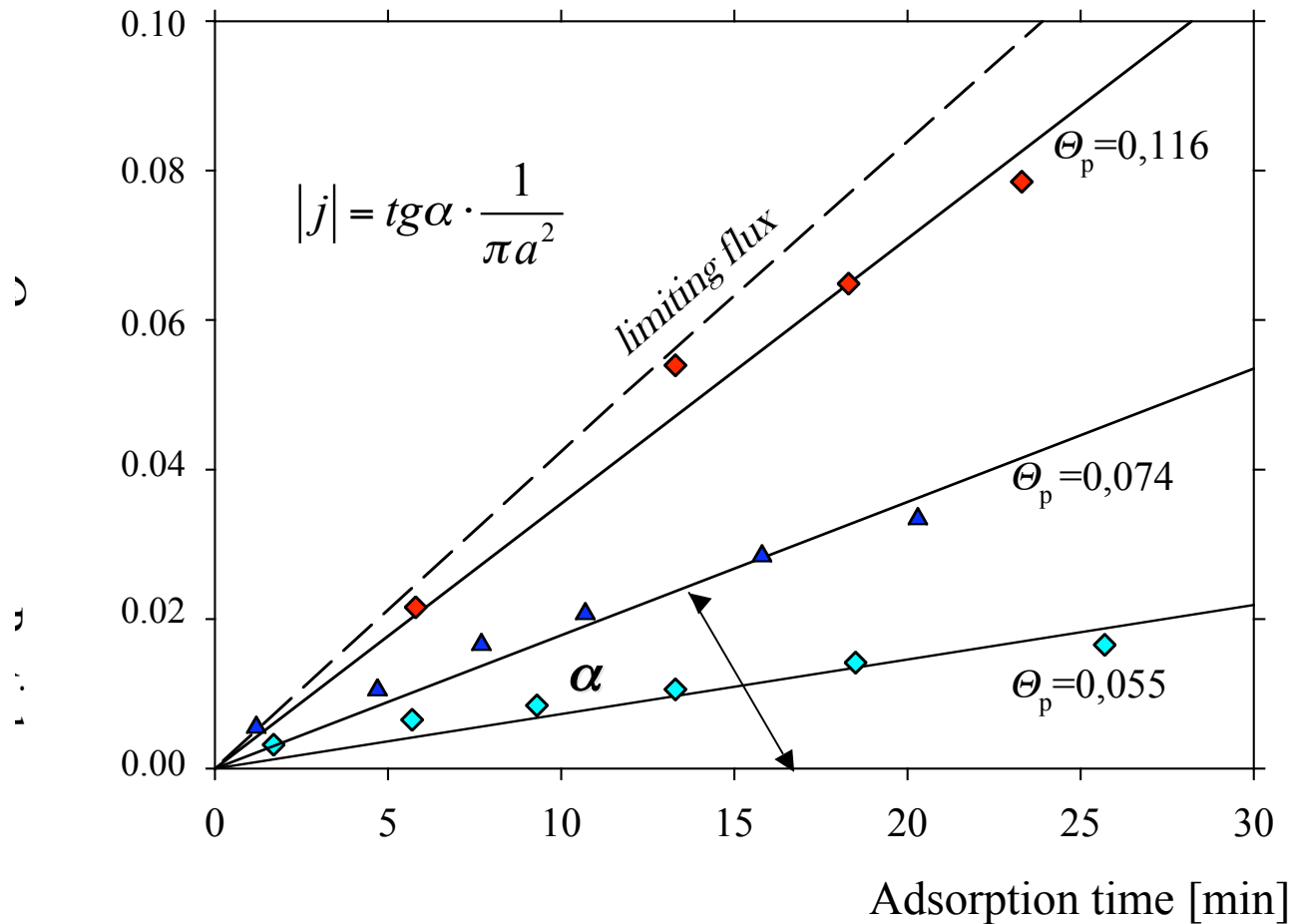
***Zbigniew Adamczyk
Malgorzata Nattich***

Washington D.C. 2009

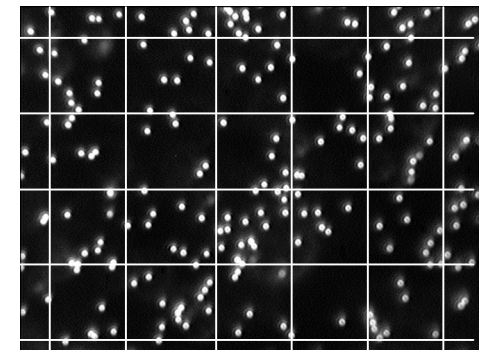
The dependence of relative zeta potential of PEI covered mica



Kinetics of particle deposition at PEI monolayers (short deposition time)



$\Theta = 0.02$



$\Theta = 0.05$

The dependence of the reduced initial deposition rate of particles on PEI coverage

